

Moab BLM's [camping policy](#) states this: [Except in restricted camping areas] [i]n all other locations, dispersed camping is permitted on public land.

Sounds reasonable, doesn't it? Except that statement is followed by: **Vehicles associated with such camping are restricted to the designated road system.**

So, because vehicles are not permitted to travel off designated routes – for any reason – this is actually a “vehicle camping only in designated campsites” for the entire Field Office. Such a restrictive policy would be appropriate for a National Park or maybe some National Monuments, or perhaps for a sensitive riparian area, but for a general policy on millions and millions of acres of Public Lands -- this is truly unheard of.

The Draft RMP also would (apparently) establish blanket authority for the Field Office Manager to declare a “Restricted Camping Area” if “... damage to an area from dispersed camping becomes obtrusive.” Moab BLM says “obtrusive” can refer to any or all of the following problems: *human sanitation, trash, hacked trees, trampled vegetation and fire danger from excessive campfires.* Trampled vegetation? This seems to us to be a meaningless criteria, allowing the Manager the authority to close camping without any public involvement.

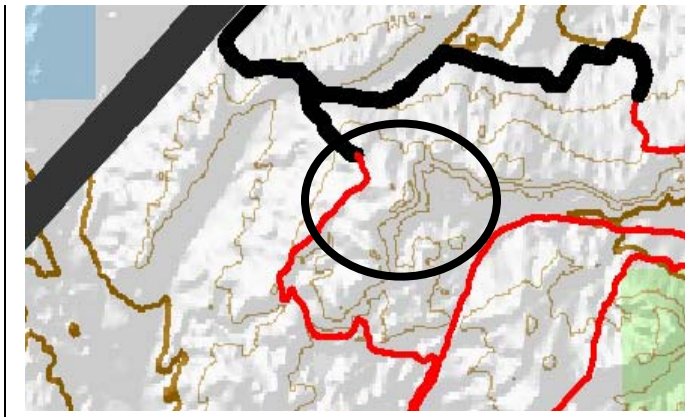
A Restricted Camping Area is where camping is banned, unless the BLM constructs improved recreation site(s) (i.e., developed campgrounds or designated campsites) with facilities managed for overnight use. Until the BLM gets around to designating and building the developed campgrounds, all existing campsites would be closed.

Moab BLM staff argues that the impacts from dispersed camping warrant such restrictions, and claim that their Travel Plan kept open the route to nearly every existing vehicle campsites. They say that most every campsites that did not have a “resource problem” remained open.

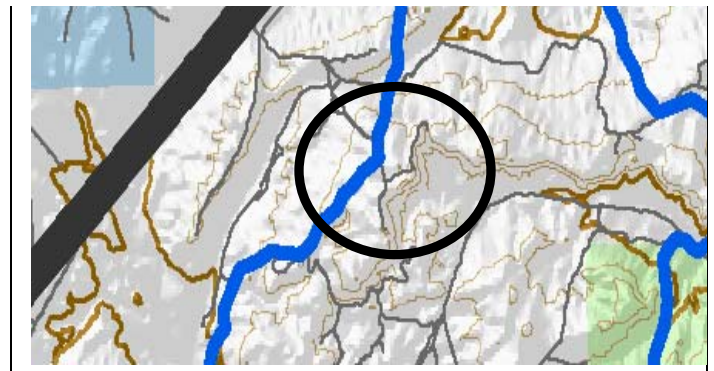
But a quick review of the maps shows a completely different story, **and it's got us very concerned.**

**Check this:**

This is the Travel Plan for Alt. C. The red and black lines are open roads. The big fat grey line is I-70



This map shows the Motorcycle Trails (Alt. E) in Blue. But check the little grey lines. Those are existing roads. Now compare the maps. Our best info indicates as many as five existing campsites will be closed in this one small area alone.



The question that is not answered anywhere in the DEIS is which, and how many campsites, will be closed? The law says the public needs to be able to reasonably determine the impacts to their uses of public lands.

Here is a quick summary of Moab BLM's proposed camping policy:

All camping will be restricted to designated sites. Campers are required to carry out solid human body waste unless toilets are provided, fires are restricted to the designated site, and collection of firewood is prohibited. The controlled camping areas (some of which may have zero sites designated) are: Bartlett/Courthouse/Dubinky area, Long Canyon road corridor, Gemini Bridges road corridor and within Little Canyon, Seven Mile Canyon, the BLM land west of Arches National Park, Blue Hill-Black Ridge area, Utah Rims, White Wash Sand Dunes, Ten Mile Canyon (Dripping Spring Area), Mill Creek Canyon Management Area, areas within Spanish Valley, Kane Creek Crossing, land surrounding developed recreation areas in the Canyon Rims Recreation Area, the corridor of the Green River "Daily")

As campgrounds are constructed in the above or in other areas, camping would be restricted to improved recreation sites (i.e. campgrounds or camping areas) with facilities managed for overnight use.

In all other locations, dispersed camping is permitted on public land except that vehicles associated with such camping are restricted to the designated road system.

Fees may be charged for any and all campgrounds on BLM administered land.

No casting of dinosaur tracks without a permit issued through the BLM Utah State Office.

No glass containers at the Moab Canyon Sand Hill and at the Powerhouse Lane trailhead and lower Mill Creek for a distance of 1 mile from the trailhead.

No burning of wood pallets on public lands within the Moab Field Office.

No camping with vehicles within 200 feet of isolated springs and potholes to allow space for wildlife access to water.

No commercial or private equestrian use in Negro Bill Canyon. Commercial equestrian use in Mill Creek Canyon would only be allowed on the Steelbender Road.